

USB 3.0 to Gigabit Ethernet Adapter

Quick Installation Guide

Introduction

This USB 3.0 Ethernet Adapter is a cost effective solution that converts a USB port into a 10/100/1000 Base-T Ethernet port. It enables low cost and affordable Ethernet network connection to desktop, notebook PC, and embedded system using popular USB ports. No need to purchase an expensive network interface card and also spare a PCI or Card-bus slot, by using your existing USB ports one can upgrade network connection speed.

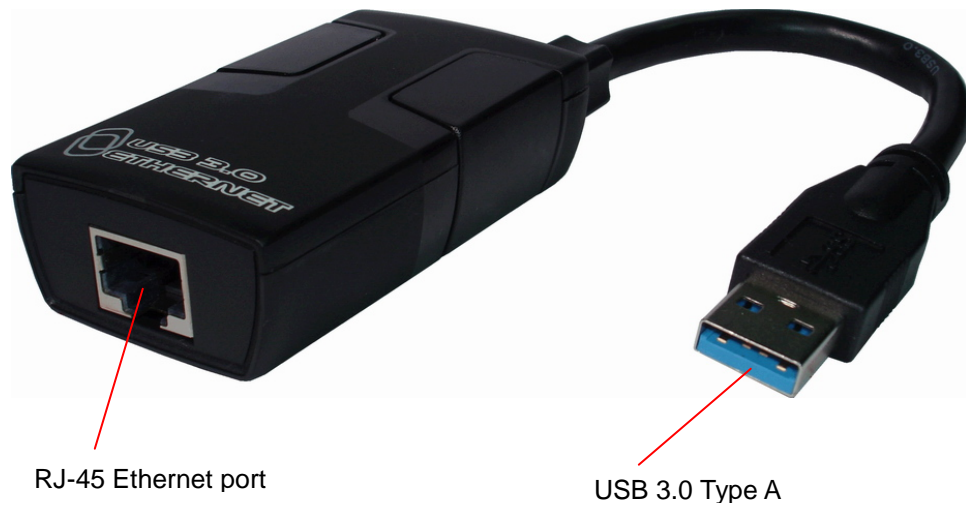
Features

- Supports IEEE 802.3az (Energy Efficient Ethernet)
- Supports USB Super/High/Full Speed modes with Bus-power or Self-power device auto-detect capability
- Integrates 10/100/1000Mbps Gigabit Ethernet MAC/PHY
- Compliant with USB specification V3.0 / V2.0 / V1.1
- IEEE 802.3, 802.3u and 802.3ab compatible
- Supports dynamic power management to reduce power dissipation during idle or light traffic
- Supports Windows XP / Vista / 7 / 8 / 8.1 / [10](#); Linux Kernels 2.6.5; Mac 10.6.x or higher

Specification

Model No.	UTE-300B					
Chip	ASIX					
Network Standards	IEEE 802.3 10Base-T , IEEE-802.3u 100Base-T , TX and T4 compatible					
Data Transfer Rates	10 / 100 / 1000Mbps (Half / Full Duplex)					
Compliant	USB Ver. 3.0 / 2.0 / 1.1					
LED Indicators	Orange	Duplex	Red	Link	Green	Read / Write
Connectors	Host	USB 3.0 A Male				
	Ethernet	8P8C RJ-45 Female				
Power Mode	Bus powered					
Operating Temperature	0°C to 50°C					
Cable Length	0.15m					
Dimension	66 x 39 x 20 mm					

Physical Diagram



Installation

DO NOT connect the Ethernet Adapter to the computer before completing the driver installation.

Windows

1. Connect the USB 3.0 Gigabit Ethernet Adapter to an available USB port.
2. Insert the provided CD into your DVD/CD-ROM drive.
3. Locate and double click <Setup.exe> to launch the setup procedure. Click <Next> to continue, and click <Finish> to complete the installation

NOTE: Your computer may be prompted to restart once the install completes.



Mac OS

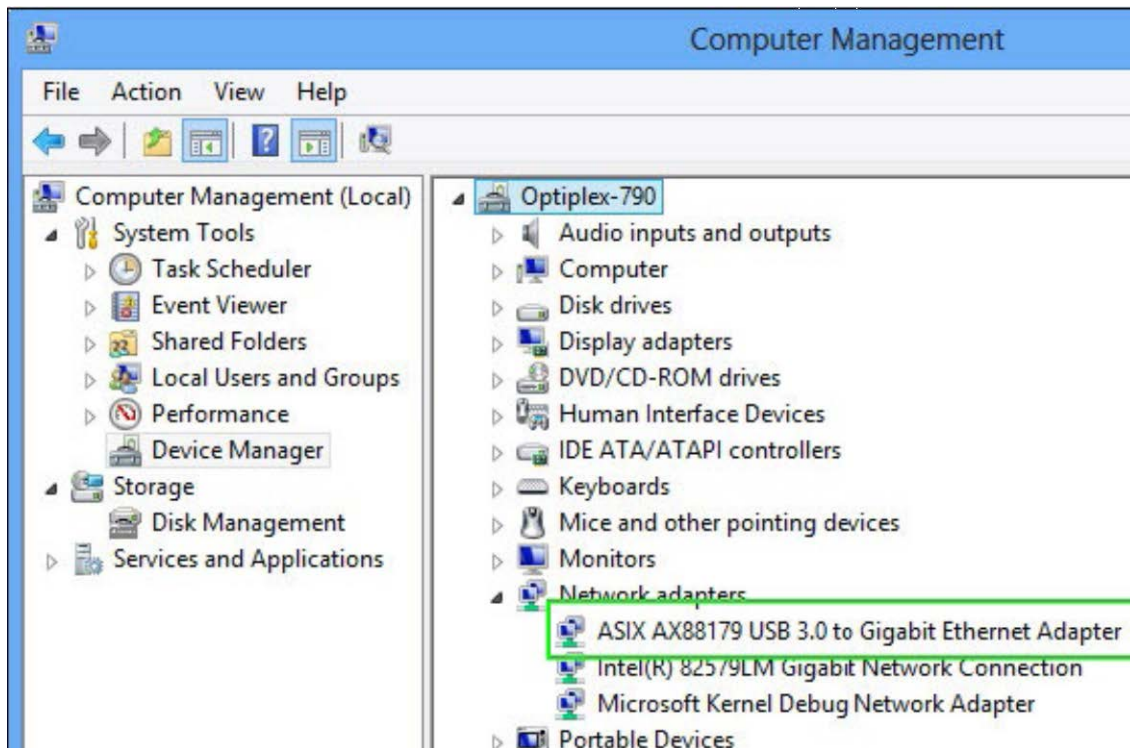
1. Connect the USB 3.0 Gigabit Ethernet Adapter to an available USB port.
2. Insert the provided CD into your DVD/CD-ROM drive.
3. Locate and double click <AX88179...pkg> to launch the setup procedure.
4. Follow the on-screen instructions to complete the installation.

NOTE: Your computer may be prompted to restart once the install completes.

Verifying the driver

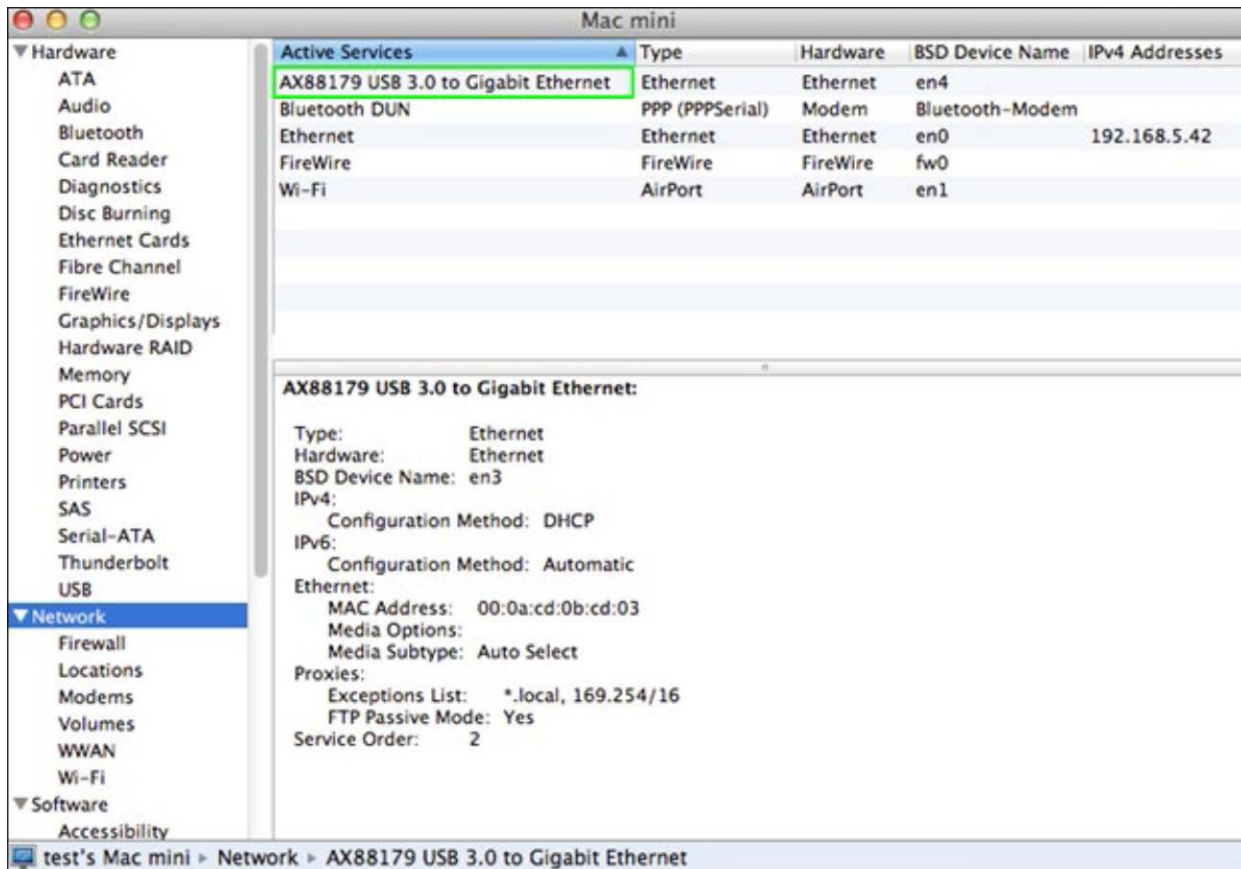
Windows

1. Open the *Device Manager* by right-clicking on **Computer**, and then select **Manage**. In the new *Computer Management* window, select **Device Manager** from the left window panel (For Windows 8/8.1/10, open the **Control Panel** and select **Device Manager**).
2. Expand the “Network adapters” section. On a successful install, you should see the following devices installed with no exclamation points or question marks.



Mac OS

1. Open the *System Profiler* by clicking the Apple symbol in the top left corner, selecting **About this Mac**, then select **System Report**.
2. Expand the “Network” section. With the adapter connected, you should see the following device in the list.



Note: If there appears a question or exclamation mark, the driver is not properly installed. Please delete the item then, unplug the adapter and repeat the installation.

Connection:

Connect the adapter to an available network when the installation procedure is completed.

1. Connect an Ethernet cable to the Ethernet port of the adapter, and connect the other end of the Ethernet cable to an available network hub, switch or router.
2. Plug the USB connector of the adapter into a free USB port of the computer. A pop-up message will appear in the notification area, indicating that the installation is completed.

Note: The LED indicators should illuminate/blink to implement successfully a proper physical connection between adapter and network. If the LED indicators do not illuminate/blink, please verify the cable connection between all the network devices.

Regulatory Compliance

Disclaimer

Information in this document is subject to change without notice. The manufacturer does not make any representations or warranties (implied or otherwise) regarding the accuracy and completeness of this document and shall in no event be liable for any loss of profit or any other commercial damage, including but not limited to special, incidental, consequential, or other damages.

No part of this document may be reproduced or transmitted in any form by any means, electronic or mechanical, including photocopying, recording or information recording and retrieval systems without the express written permission of the manufacturer.

All brand names and product names used in this document are trademarks, or registered trademarks of their respective holders.

CE Certification

This equipment complies with the requirements relating to electromagnetic compatibility.

It has been manufactured under the scope of RoHS compliance.

FCC Compliance Statement

This equipment generates and uses radio frequency and may cause interference to radio and television reception if not installed and used properly. This equipment has been tested and found to comply with the limits of a Class B digital device, pursuant to part 15 of the FCC Rules. These limits are designed to provide reasonable protection against harmful interference in a residential installation.

You are cautioned that changes or modification not expressly approved by the party responsible for compliance could void your authority to operate the equipment.

This device complies with part 15 of the FCC Rules. Operation is subject to the following two conditions:

- (1) This device may not cause harmful interference, and
- (2) This device must accept any interference received, including interference that may cause undesired operation



WEEE (Waste of Electrical and Electronic Equipment), Recycling of Electronic Products

In 2006 the European Union introduced regulations (WEEE) for the collection and recycling of all waste electrical and electronic equipment. It is no longer allowable to simply throw away electrical and electronic equipment. Instead, these products must enter the recycling process.

Each individual EU member state has implemented the WEEE regulations into national law in slightly different ways. Please follow your national law when you want to dispose or any electrical or electronic products. More details can be obtained from your national WEEE recycling agency.